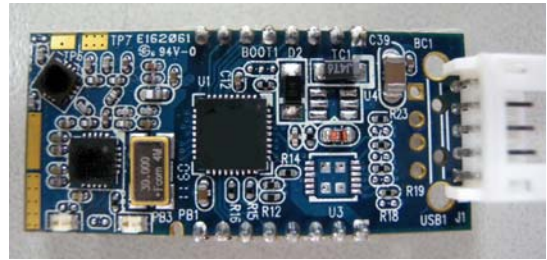


### EasySensor RF Module

- ★ Advanced Wireless Sensor Network Module
- ★ Wireless Networking Ready
- ★ Easy Command
- ★ Plug & Play
- ★ Add Sensors Only, NO APP needed



#### Specification:

- Build in Multiple Cluster, Repeater Topology Wireless Sensor Networking
- Alternate Route/Path Transmission
- Low Cost for Each Node, Definable Master/Slaver/Node
- Max 23 Levels, no. of Slave at Level n is  $(2^{(23-n)}-2)$
- 315/433/868/915/950MHz UHF ISM Predefined Frequency Band, Multi-Channels
- Transmit Power : +10dBm ~ +20dBm, Auto RF Power Output Adjustment Mode
- Receive Sensitivity: -115 dBm
- Excellent Wireless Communication over Distance, Long Range ~2Km @Open Area
- Up to 128Kbps Data Transmission Rate
- On Module High Performance CPU with DSP instruction; DSP Lib Available
- Power Management by Sleeping Mode, Idle Mode and Power Down Mode
- Wake Up from RF Signal
- Build In Chip Antenna or External Antenna
- Encryption by user defined key words
- 1x UART
- Optional 1xUSB or 1xCAN
- Remote Controllable AIO, DIO pins
- 1 x Programmable LED
- Build in Signal Conditioner
  - Up to 16-bit Differential or Single-ended Data Acquisition
  - Programmable Gain: 1/12 to 1000
  - Sensor Offset Compensation
  - Programmable Resolution
  - 2x Digital Outputs to Bias Sensors
- Build In ADC Voltage Detection
- NC Command Set for Configures, Data and Data Stream, no programming needed, through UART or USB
- Wide range 4.5Vdc~24Vdc Input Voltage
- Very Low Power Rx <30mA ; Tx <45mA @ wo Sensor/IO Loading
- Dimension: 42mm x 18mm
- -20 to +80C temperature range
- Sensor APPLICATION
  - Weight Sensor, Industrial Pressure Sensor, Industrial Temperature Sensor, Barometer

## Application

- ☆ Factory Automation
- ☆ Home Automation
- ☆ Industrial Telemetry
- ☆ Alarm & Security

